



CHESNEYS

LONDON • NEW YORK • SHANGHAI



BURLINGTON fireplace in limestone
with Beaumont wood burning stove

An introduction to Chesneys



Chesneys is internationally recognised as the leading brand in the Luxury heating sector, offering its clients a uniquely diverse range of beautifully designed, technically innovative products that are kind to the environment.

A family run business, for nearly 40 years our success has been founded on an uncompromising commitment to our core values. Outstanding craftsmanship, intelligent engineering and innovative design have been the cornerstones of this success, coupled with a passion to deliver service levels of the highest standard.

The Chesneys portfolio includes an extensive collection of contemporary and period fire surrounds and accessories, an industry leading range of wood burning and gas stoves, decorative gas and electric fires, and we have recently launched the most technically advanced and environmentally friendly range of Bioethanol fires to be found.

Our range runs to many hundreds of different products and designs, which can be viewed on our website, but in the following pages we will show the most popular designs within each of our product categories.

I hope that you will find plenty to enjoy.

Paul Chesney

A handwritten signature in black ink that reads "Paul Chesney".

CONTENTS

Fireplaces 2

Wood burning Stoves 14

Gas Stoves 17

Alchemy Bioethanol Fires 19

Decorative gas Fires 21

Fire Baskets 22

Olympus Electric fires 24

FIREPLACES

Chesneys offer the widest range of quality fireplaces to be found anywhere

Every fireplace that we produce relies on the precise masonry skills and craftsmanship, which coupled with premium quality natural materials, are the elements required for a fireplace of true quality.



SCARPA fireplace in Nero Marquina with Soho basket and universal fire dogs

THE CONTEMPORARY COLLECTION

Our Contemporary Collection combines simple architectural form with a range of beautiful natural materials, offering an imaginative alternative to traditional fireplace design.

MANHATTAN CLASSIC

One of the most popular designs in our Contemporary Collection, The Manhattan Classic epitomises simple architectural form.

Overall size 58"(1473)W x 45"(1143)H

Opening 40"(1016)W x 36"(915)H

Shelf 58"(1473)L x 43/8"(110)D

Depth of jamb 43/8"(110)





DEVONSHIRE WITH ALPINE STOVE

The Devonshire displays handsome proportions and crisp detailing with an elegant downward taper to the pilasters. Carved in limestone, it is shown here with slate hearth and slips with the Alpine stove from Chesneys Stove Collection.

Standard size

Overall size 531/4"(1354)W x 471/4"(1201)H
Opening 38"(965)W x 38"(965)H
Shelf 591/2"(1511)L x 9"(229)D
Depth of jamb 53/4"(145)
Height of footblock 6"(152)

Reduced size

Opening 34"(863)W x 35"(889)H
Shelf 54"(1371)L x 83/8"(211)D
Overall size 473/4"(1214)W x 433/4"(1111)H
Depth of jamb 5"(127)
Height of footblock 6"(152)



ALDERNEY

Carved in Limestone and based on a Queen Anne design, the Alderney combines a robust bolection moulding with a corniced shelf and will suit both contemporary and period interiors.

Overall size 501/4"(1275)W x 471/2"(1205)H
Opening 36"(914)W x 36"(914)H
Shelf 581/8"(1474)L x 85/8"(217)D
Depth of jamb 6"(152)
Height of footblock 6"(152)

CLANDON DETAILS page 5

Standard size

Overall size 501/4"(1275)W x 511/4"(1300)H
Opening 36"(914)W x 36"(914)H
Shelf 575/8"(1461)L x 8"(205)D
Depth of jamb 6"(152)
Height of footblock 6"(152)

Reduced size

Opening 35"(890)W x 35"(889)H
Shelf 54"(1372)L x 71/8"(180)D
Overall size 471/2"(1208)W x 49"(1245)H
Depth of jamb 51/4"(134)
Height of footblock 51/4"(134)

CLANDON

The Clandon fireplace, carved in limestone, is based on a Queen Anne design from the beginning of the 18th century. Its simple uncluttered lines combined with generous curves make it very flexible for use anywhere.

Shown with the Shoreditch wood burning stove and slate hearth.





ALHAMBRA

The Alhambra is a traditional design with a contemporary twist. Larger than many fireplaces and with a strong architectural form, it is shown here in limestone with the Morris 22" fire basket for dogs, Burton andirons and black slate hearth.

Overall size 59 1/4"(1504)W x 507/8"(1290)H
 Opening 38"(965)W x 38"(965)H
 Shelf 63"(1600)L x 9"(228)D
 Depth of jamb 71/8"(180)
 Height of footblock 57/8"(150)



BURLINGTON

The Burlington fireplace is a timeless design carved from limestone. With its simple geometric lines and classical proportions, it will give architectural interest and a sense of scale to both modern and traditional interiors.

Shown with modern steel slips, Soho fire basket, Spherical steel fire dogs and limestone hearth.

Standard size

Overall size 52"(1321)W x 481/8"(1220)H
 Opening 36"(915)W x 36"(915)H
 Shelf 601/8"(1525)L x 87/8"(224)D
 Depth of jamb 51/2"(140)
 Height of footblock 51/8"(130)

Reduced size

Overall size 463/4"(1188)W x 457/8"(1163)H
 Opening 323/8"(823)W x 35"(889)H
 Shelf 54"(1371)L x 8"(201)D
 Depth of jamb 5"(127)
 Height of footblock 45/8"(117)

SPECIAL MATERIALS

In response to the growing popularity of exciting and unusual materials in the design of fireplaces, we have assembled a selection of beautiful marbles, to form our Special Materials Collection.

MILO BOLECTION surround in Breccia Vendome, a rare and beautiful material quarried in France, and shown with hand engraved brass Osterley fire basket from Chesneys collection of period Fire baskets.



8 SPECIAL MATERIALS



LUNA IN ANATOLIAN GREY



METRO IN ARABESCATO CORCHIA



MILO IN TURCHINO STRIATO



METROPOLITAN IN SILVER TRAVERTINE



KENT IN PELE TIGRE



STIRLING IN NERO MARQUINA



CLANDON FRAME IN CALACATTA VIOLA



SCARPA IN AZUL VALVERDE

Any fire surround in the Chesneys range can be fabricated from these materials.

This page features some of the more architectural designs that we offer, and which provide an ideal canvas for these beautiful materials.

The materials that we work in are naturally beautiful. Every block of stone or marble is unique and these images are only intended as a guide to the appearance of the material in question.

A collection of rare and beautiful natural marbles for the manufacture of fireplaces



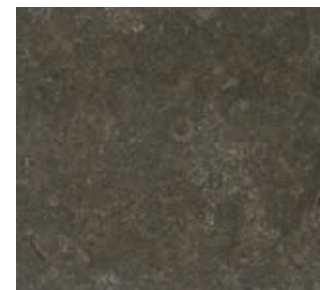
ANATOLIAN GREY



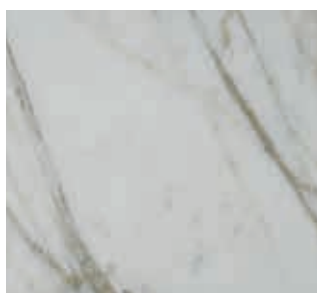
ARABESCATO CORCHIA



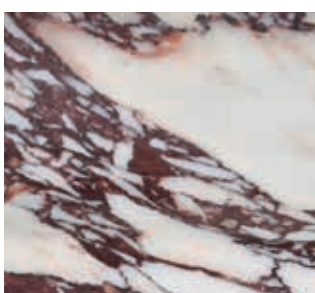
ARABESCATO OROBICO



AZUL VALVERDE



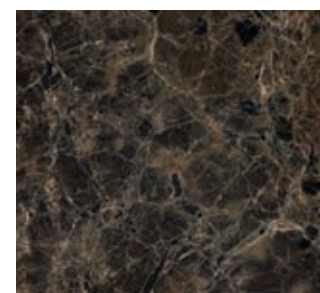
CALACATTA ORO



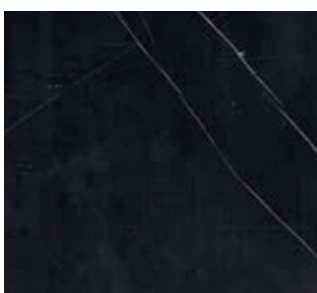
CALACATTA VIOLA



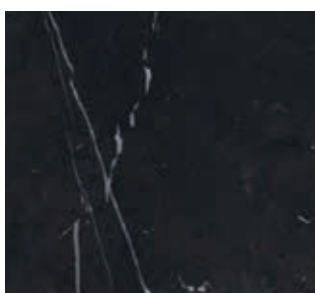
CARRARA BIANCO



DARK EMPERADOR



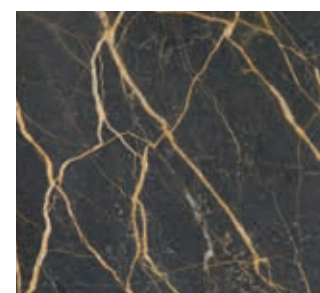
NERO BILBAO



NERO MARQUINA



PELE TIGRE



PORT ST LORRAIN



RIVINA



SILVER TRAVERTINE



STATUARIO VENATO



TURCHINO STRIATO

THE HISTORICAL COLLECTION

Ranging from Queen Anne to Edwardian and including both British and Continental designs, the fireplaces in our Historical Collection are exact copies of antique originals, recognised by conservation bodies and architects for their accuracy and authenticity.

Whether we are carving a museum quality facsimile of a Robert Adam chimneypiece or reproducing a modest Victorian fire surround, every aspect of the detail will be totally accurate.

Overall size 583/16"(1478)W x 517/16"(1305)H
Opening 40"(1016)W x 40"(1016)H
Shelf 641/4"(1631)L x 81/8"(205)D
Depth of jamb 5"(128)
Height of footblock 51/2"(140)



LANGLEY Regency chimneypiece in statuary marble with steel register grate.

BUCKINGHAM

WITH ORNATE ARCHED REGISTER GRATE

An elegant version of one of the most popular designs of the Victorian period. The pilasters and frieze are inset with fielded panels while the reeded mantel shelf is supported by finely carved elongated corbels. Shown with ornate register grate.

Overall size 567/8"(1444)W x 491/2"(1257)H

Opening 40"(1016)W x 40"(1016)H

Shelf 65"(1651)L x 10"(254)D

**SOANE IV**

WITH BYRON FIRE BASKET

This chimneypiece exemplifies Sir John Soane's unique ability to re-interpret classical form and produce a design of stunning modernity. The inverted bow to the pilasters and stylised Greek Key motif could only have been conceived by Soane. Shown with Byron fire basket.

Overall size 60"(1524)W x 431/2"(1106)H

Opening 40"(1016)W x 371/4"(945)H

Shelf 637/8"(16240)L x 97/8"(250)D

Depth of jamb 71/2"(192)

Height of footblock 5"(127)





Overall size 61 1/2"(1560)W x 65"(1651)H
Opening 46 1/2"(1182)W x 44 1/2"(1129)H
Shelf 74"(1880)L x 11"(281)D
Depth of jamb 73/8"(186)
Height of footblock 57/8"(150)

CHICHESTER WITH OSTERLEY STEEL FIRE BASKET

A mid 18th century chimneypiece with moulded dog leg jambs, a repeat frieze carved with stiff leaf acanthus and a corniced shelf featuring a tier of crisp egg and dart carving. It is shown here with slate hearth and slips and Osterley steel fire basket.



The Marble Regency Bullseye 36

Overall size 53"(1346)W x 43¹/₈"(1095)H
 Opening 36"(914)W x 36"(914)H
 Shelf 57¹/₂"(1460)L x 8¹/₄"(209)D
 Depth of jamb 6"(152)
 Height of footblock 6"(152)
 Depth of rebate 1"(25)

The Marble Regency Bullseye 40

Overall size 57"(1447)W x 47¹/₈"(1197)H
 Opening 40"(1016)W x 40"(1016)H
 Shelf 61¹/₂"(1561)L x 8¹/₄"(209)D
 Depth of jamb 6"(152)
 Height of footblock 6"(152)
 Depth of rebate 1"(25)

BULLSEYE WITH STEEL REGISTER GRATE

The simple lines of the Regency period make the Marble Regency Bullseye an ideal fireplace for contemporary interiors. Cushion moulded pilasters and simple bullseye paterae create an elegant and understated design. Available in standard and large sizes. Shown here with the Cubitt steel register grate.

STOVE COLLECTION

We believe that a wood burning stove should be an energy efficient source of heat and provide an attractive focal point in any room.

To achieve this our stoves combine elegant design, whether classical or contemporary, with outstanding engineering.

SALISBURY 8 stove is shown with the Burlington fireplace from Chesney's Fireplace Collection



ALPINE

With its imaginative retro styling inspired by 50's product design, the Alpine is a stove that occupies a unique place in the market. With its nickel plated door furniture and rounded lines, this a stove that will make a visually arresting and entirely original design statement in any interior.



ALPINE 4kW ECO 2022

BEAUMONT

With its elegant and refined appearance, the Beaumont is a stove that will look at home in the most sophisticated of interiors. Its design includes swept cabriole legs and a corniced top section, uniquely classical features that are not to be found in other stoves.



BEAUMONT 4kW ECO 2022

SALISBURY

The Salisbury is very much in the style of a traditional wood burning stove. Reliability and efficiency are reflected in its uncluttered appearance. A robust and simple design with a solid cast iron door, housing a large glass window that allows the fire to be enjoyed in all its warmth and beauty.



SALISBURY 4kW ECO 2022

SHOREDITCH

The Shoreditch stove with its modern linear design will sit comfortably in a wide range of modern interiors. Installed either as a free-standing unit or within a fire chamber, the Shoreditch provides an attractive and heat efficient focal point to a room.



SHOREDITCH 4kW ECO 2022



BEAUMONT 5WS SERIES



SALISBURY 5WS SERIES



SHOREDITCH 5WS SERIES



SALISBURY 8WS SERIES

Available as 6kW or 8kW model.



BEAUMONT 8WS SERIES

Available as 6kW or 8kW model.



SHOREDITCH 8WS SERIES

Available as 6kW or 8kW model.

4 Series

The Alpine 4kW, the Beaumont 4kW and the Salisbury 4kW Eco 2022 wood burning stoves exceed Eco Design 2022 requirements.

5 Series

The Beaumont 5WS, the Salisbury 5WS and the Shoreditch 5WS Series wood burning stoves are DEFRA exempt for use in smoke control areas which mean they can be safely and legally used to burn logs in all major cities and towns throughout the UK, and also exceed Eco Design 2022 requirements.

8 Series

The Beaumont 8WS, the Salisbury 8WS and the Shoreditch 8WS Eco 2022 wood burning stoves are DEFRA exempt for use in smoke control areas and also exceed Eco Design 2022 requirements.

Nominal output 4.0kW

A black finish is standard. Optional colours are available at an additional cost. See website for details.

16 WOOD BURNING STOVES COLLECTION

The clean-burn air-wash technology that features in all our stoves substantially reduces emissions and contributes to a cleaner environment, while delivering excellent levels of efficiency. Robustly designed and painstakingly manufactured, a Chesneys stove promises years of reliable use.

Nominal output 4.0kW

A black finish is standard. Optional colours are available at an additional cost. See website for details.



SALISBURY DOUBLE SIDED 10 SERIES

The Salisbury is now available as a double sided 10 kilowatt wood burning stove (5kW to each side), for larger rooms that require an increased heat output.



SALISBURY 12WS SERIES

The Salisbury is now available as a 12WS Series wood burning stove, for larger rooms that require an increased heat output.



SALISBURY 5WS SERIES LS

Stove with integrated log store.



MILAN 4kW ECO 2022

The Milan 4kW Eco 2022 exceeds Ecodesign 2022 requirements.



SHOREDITCH LS 4kW ECO 2022

Stove with integrated log store.



SHOREDITCH XLS 4kW ECO 2022

Stove with integrated log store.



SHOREDITCH LS 5WS SERIES

Stove with integrated log store.



SHOREDITCH XLS 5 SERIES

Stove with integrated log store.

GAS STOVES



SALISBURY gas stove is shown with the Metro limestone surround and Modern Steel slips from Chesney's Fireplace Collection.

Our gas stoves are as close as you can get to a real fire, providing the beauty and warmth of a log fire at the convenient flick of a switch. We have created a fire in our stoves that emulates the flame pattern of a real fire with hand painted logs that produce a deep lifelike glow.



One of the main reasons for choosing a gas stove is convenience. A Chesneys gas stove is operated by a hand-held fully sequential remote-control device that allows you to control the flame height and heat output from the comfort of your armchair.

Chesneys gas stoves are available in the following options:

- 4.4kW standard size or 5.7kW large size. Shoreditch only available in standard size.
- Large stove features a new premium burner.
- Conventional Flue or Balanced Flue.
- Natural Gas or LPG.



BEAUMONT GAS STOVE

With its classical detailing and refined appearance, the Beaumont gas stove is an elegant addition to the decorative scheme of any room. Its design includes uniquely classical features such as swept cabriole legs and a corniced top section.



SALISBURY GAS STOVE

The Salisbury is very much in the style of a traditional wood burning stove. A robust and simple design with a solid cast iron door, housing a large glass window that allows the fire to be enjoyed.



SHOREDITCH GAS STOVE

The Shoreditch gas stove's simple clean lines allow it to sit comfortably in a wide range of room styles and make it the ideal interior for a fire surround of contemporary architectural style.

As an increasing number of people acknowledge the urgent need to protect the environment, Bioethanol Fires are growing rapidly in their popularity and use. Clean and easy to install, Bioethanol Fires are ecologically friendly, burning fuel extracted from plants during a full combustion process.

ALCHEMY BIOETHANOL FIRES

In addition to offering a responsible climate friendly choice, Ethanol Fires provide the opportunity to install a living flame fire without the need for a chimney or expensive installation costs. Providing that an electricity supply is available, an Ethanol Fire can be installed in just about any location.

An Alchemy Ethanol Fire provides a beautiful living flame fire with the following advantages:

- No chimney required
- Fully remote controlled
- Highly economical
- Automatic ignition
- 100% energy efficient
- Odour-free when in use

ALCHEMY FB18

The Alchemy FB18 has been designed for installation with a free-standing fire basket. For a contemporary look the FB18 can be installed with its polished steel top plate left visible and a ribbon flame effect. Alternatively, the FB18 is available with a detachable steel plate displaying hand painted ceramic logs that successfully emulate the beauty and appearance of a real log fire, achieving an outstandingly realistic appearance as the flames lick around the logs. The steel log plate can be lifted easily on and off for the purpose of re-fueling.

The FB18 can be installed with the Alchemy FB18 fire basket or the 18" Soho fire basket from the Chesneys range of fire baskets.

Alchemy have taken the performance and use of bioethanol to a new level. Unique features include a patented combustion process that produces a burn time of up to 10 hours with no need to re-fuel and approval for installation in rooms much smaller than those required for competing ethanol products.



ALCHEMY FB18 FIRE with log plate with Chesneys 18" Soho fire basket.



ALCHEMY FB18 FIRE with Alchemy fire basket, shown without log plate.



LUXXCON POLISHED CONCRETE

Chesneys' new Luxxcon polished concrete range has also been designed to accommodate Alchemy RB1000 linear burner

ALCHEMY RB700, RB1000 & RB1500

The Alchemy Bioethanol collection also includes linear ribbon burners in three sizes. These are a perfect design feature for a contemporary interior and can be installed in a number of ways.

The three units measure 700mm, 1000mm and 1500mm in length and all produce mesmerising flame patterns.

Each burner is supplied with an anti-reflective glass upstand anchored to the top plate, which protects the ribbon flame pattern from disruption caused by draughts. The unique 'v' shaped aperture to the flame channel also creates an extremely robust flame that is especially resistant to movement in the air around it.

Each model can be installed as a freestanding fire that is open to the room from all four sides, or less, as required. Alternatively, an Alchemy linear burner can be installed as an inset fire.

Alchemy have taken the performance and use of bioethanol to a new level. Unique features include a patented combustion process that produces a burn time of up to 10 hours with no need to re-fuel and approval for installation in rooms much smaller than those required for competing ethanol products.



THE ALCHEMY BIOETHANOL COLLECTION INCLUDES A RANGE OF LINEAR RIBBON BURNERS TO SUIT THE MOST CONTEMPORARY OF INTERIORS.

RB700 & RB1000 FIREBOXES

Alchemy have designed two pre-fabricated inset metal fireboxes to accommodate the RB700 and RB1000 models.

LINEAR BURNER

Installed as an inset fire.





DECORATIVE GAS EFFECT FIRES

The range of gas effect fires includes both open fronted and glass fronted gas fires. A Chesneys gas effect fire is not just about engineering and performance. Every fire that we design has to also meet the most challenging aesthetic criteria and achieve the most realistic appearance possible.

We have created flame patterns that are both generous and realistic, emulating the flame patterns of a real fire in combination with individually hand painted logs that produce a deep life-like glow. Using the latest technology, our fires incorporate features such as thermostatic room temperature control and remote adjustment of flame height and heat output.

A CHESNEYS GAS EFFECT FIRE EMULATES THE FLAME PATTERNS OF A REAL FIRE IN COMBINATION WITH THE LIFE-LIKE GLOW OF HAND PAINTED LOGS



COAL EFFECT DFE GAS FIRE

Coal effect gas burners offer uniquely captivating and realistic looking fires which can be used in Chesneys extensive range of fire baskets and register grates.

Available in manually operated or fully remote controlled options.



LOG EFFECT DFE GAS FIRE

Each log in a Chesneys DFE log fire is individually hand painted. This attention to detail results in a fire of extraordinarily realistic and attractive appearance.

Available in manually operated or fully remote controlled options.

CONTEMPORARY FIRE BASKETS

A range of stunning contemporary fire baskets and fire dogs, all of which can house a real or gas fire and in some cases an Alchemy Bioethanol fire or an Electric fire.



SOHO



AMHURST



FIBONACCI



POPULAR

PERIOD FIRE BASKETS

A selection of steel and brass fire baskets, including hand engraved designs, all of which can house a real fire or gas effect fire.



CADOGAN



DORCHESTER



SYON BRASS



OSTERLEY

All Chesney’s fire baskets and register grates are suitable for use with solid fuel or DFE gas fires

FIRE DOGS AND ANDIRON COLLECTION

Fire Dogs, also known as Andirons, can provide an attractive and practical enhancement to fire baskets of both traditional and contemporary design.



SOHO FIRE BASKET WITH SPHERICAL DOGS



BYRON FIRE BASKET WITH TELFORD ANDIRONS



BALLHEAD FIRE DOGS



FAULKENER FIRE DOGS



SPHERICAL STEEL FIRE DOGS



BURTON ANDIRONS



NEWTON ANDIRONS



TELFORD ANDIRONS



OLYMPUS ELECTRIC FIRES AND BASKETS

Every living room should have a fireplace at its heart and in many modern buildings and period conversions achieving this can be a challenge. Chesneys can provide an effective and attractive solution with our range of electric fire baskets where there is no chimney.

Our electric fire baskets use ultrasonic technology to create a fine mist that is illuminated to produce unbelievably realistic flames and smoke. Combined with authentic looking logs and a glowing ash bed, the result is an electric fire basket that exceeds all expectations for realism.



SOHO FREESTANDING FIRE BASKET
with Olympus Electric Fire



BYRON FIRE BASKET
with Olympus Electric Fire



SOHO FIRE BASKET FOR DOGS
with Olympus Electric Fire



BYRON FIRE BASKET FOR DOGS
with Olympus Electric Fire

CHESNEYS

Locations

Our four beautifully appointed locations display a range of our fireplaces

CHELSEA DESIGN STUDIO

570 Kings Road,
London SW6 2DY

Telephone 020 7627 1410

Email sales@chesneys.co.uk

HAVERSTOCK HILL

147 Haverstock Hill,
London NW3 4RU

Telephone 020 7627 1410

Email sales@chesneys.co.uk

BATTERSEA

194-196 Battersea Park Road,
London SW11 4ND

Telephone 020 7627 1410

Email sales@chesneys.co.uk

ST ALBANS

70 London Road,
st Albans AL1 1NG

Telephone 020 7627 1410

Email sales@chesneys.co.uk

Chesney's pursues a policy of continuing improvement in design and performance of its products. The right is therefore reserved to vary specifications without notice. For illustration purposes some chimneypieces and baskets may be shown in optional materials or finishes other than standard production specifications.

Bespoke prices are available on application.

© Chesney's 2022 Vol 1

All showrooms are open
Monday to Friday 9:00am – 5:30pm,
Saturday 10:am – 5:00pm,
except Haverstock Hill which is
closed on Fridays.

Closed Bank Holidays.

For details of UK nationwide
stockists:

Telephone 0844 880 5375

Fax 0844 376 0046

Email dealerenquiries@chesneys.
co.uk

www.chesneys.co.uk

CHESNEYS